

INSTALLATION GUIDE

MC – Modular Cassette - STP

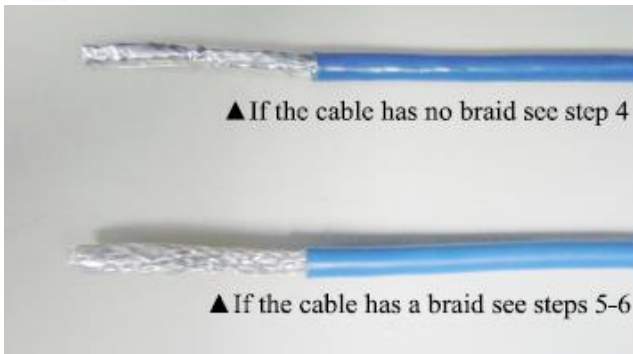


1.



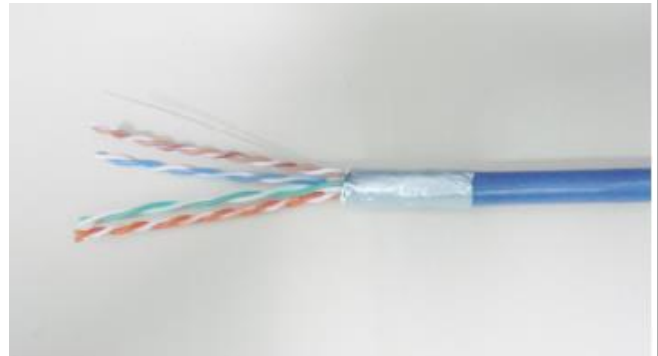
Remove the rear cover from the cassette and place the cassette on a sturdy surface.

2.



Strip approximately 7.7cm (3 inches) jacket from the cable.
Be sure that the foil and / or braid remains intact.

3.



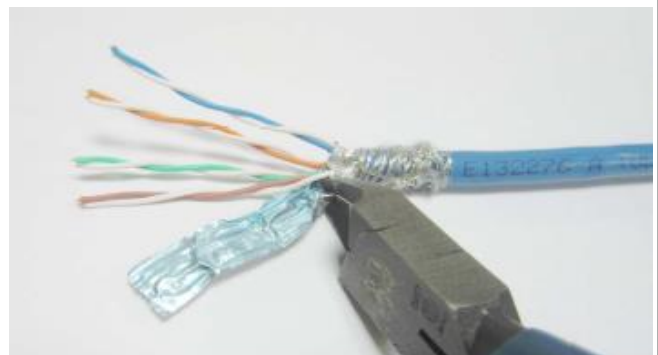
For cable with foil but no braid:
Fold the foil shield back over the jacket of the cable.

4.



For braided cables:
Push the braid back over the jacket of the cable.

5.



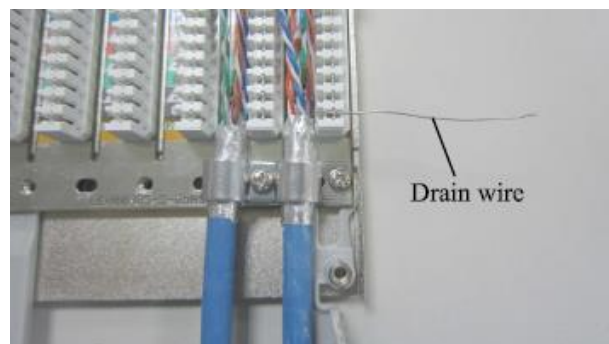
For braided cables:
Take off and cut off the foil of each pair.

6.



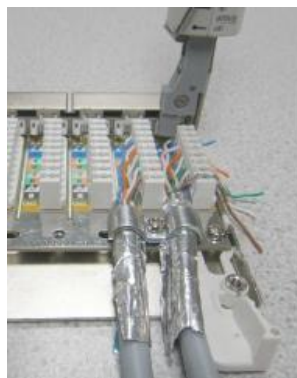
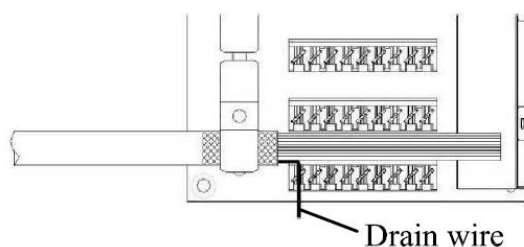
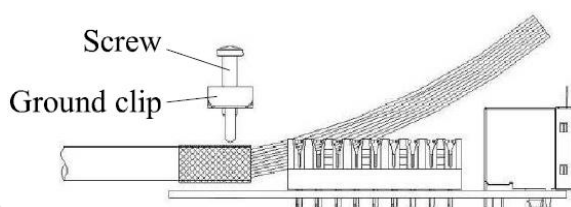
Insert the cable and attach the clip as shown.
Tighten the cable clip screw until it reaches the bottom.

7.



Insert the drain wire into the ninth slot (the slot with no color code) on the IDC connecting block as shown.

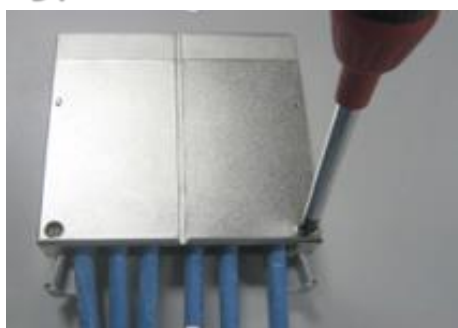
8.



Install the wires into the IDC blocks according to the wiring position 568A/568B with 110/Krone punch down tool.

	B	A	
BL /W	5	BL /W	
BL	4	BL	
O/W	1	G/W	
O	2	G	
G/W	3	O/W	
G	6	O	
BR/W	7	BR/W	
BR	8	BR	
	GND		

9.



Put the rear cover into place and lock it into position by fastening the screw.