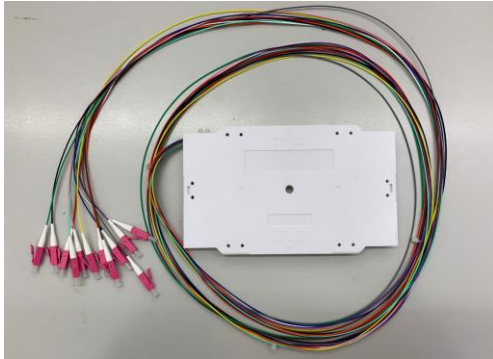


INSTALLATION GUIDE

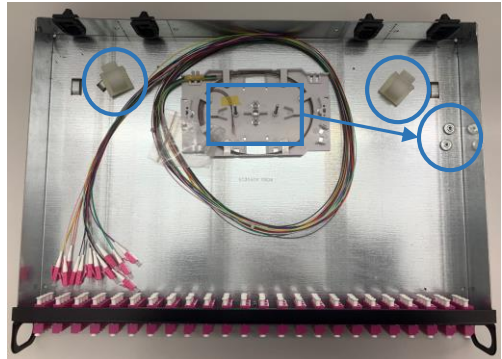
SE - Splice Equipment

1



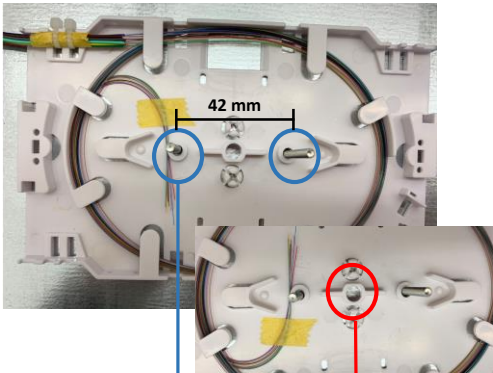
Splice equipment

2



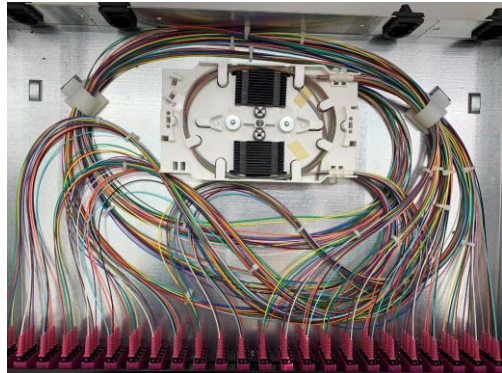
- a) Remove knurled nuts from the threaded rods
- b) Mount splice cassette
- c) Place the adhesive holder for fiber management

3



Using a TKM patch panel
Using patch panel of others brands

4



- d) Insert the pigtails in to the adapters

5

Fibre Nr.	Color
01	red 
02	green 
03	blue 
04	yellow 
05	white 
06	grey 
07	brown 
08	violet 
09	aqua 
10	black 
11	orange 
12	pink 

6

